

Séminaire de recherche
UCA - CNRS - CEPAM UMR 7264

New methods of analysis by 3D Imaging and Artificial Intelligence applied to archaeological remains

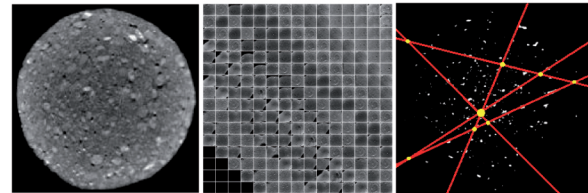
Vendredi 22 octobre 2021
9h-17h

Maison de l'Étudiant
5 avenue François Mitterrand
06300 Nice

Sur inscription
Consultez le site cepam.cnrs.fr

Projet financé par le programme UCA-JEDI ANR-15-IDEX-01

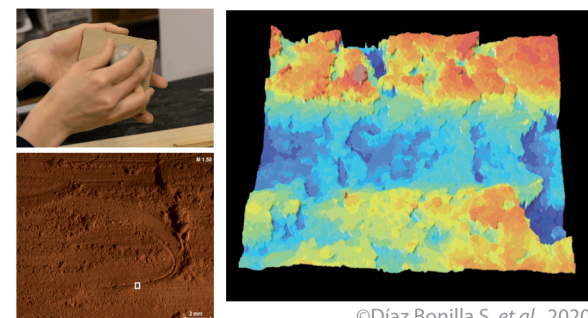
Organisatrices : Vanna Lisa Coli & Laura Cassard



©Dia K. et al., 2021



©Cassard L., 2020



©Diaz Bonilla S. et al., 2020

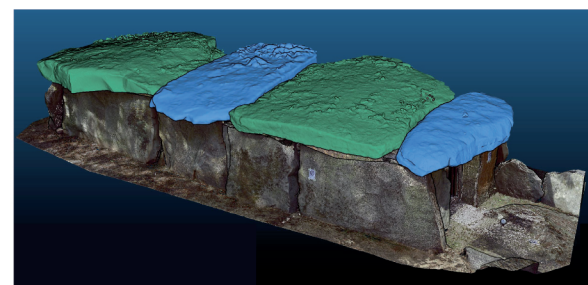
```
def test_label_predictions(model, device, test_loader):  
    model.eval()  
    predictions = []  
    with torch.no_grad():  
        for data, target in test_loader:  
            data, target = data.to(device),  
            output = model(data)  
            prediction_mod(output, 'sheep')  
            prediction_mod(output, 'goat')  
            prediction_mod(output, 'mouflon')  
            prediction_mod(output, 'chamois')  
    return [i.item() for i in predictions]
```



©Vuillien M. et al., 2021



©López-Montalvo E., 2021



©Ard V., Laurent A. et al., 2021



Master Préhistoire,
Paléoenvironnements,
et Archéosciences

Master Métiers du
Patrimoine, Histoire
de l'Art et Archéologie

MSc Data Science &
Artificial Intelligence

UNIVERSITÉ CÔTE D'AZUR



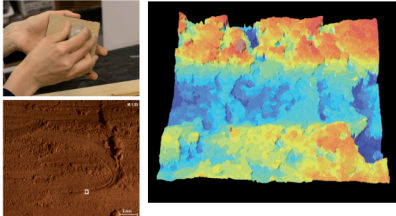
New methods of analysis by 3D Imaging and Artificial Intelligence applied to archaeological remains

Seminar program

9h00 - 9h30 Accueil des participantes et participants

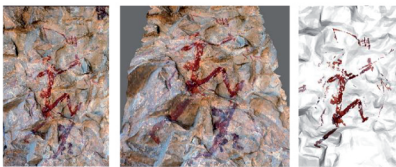
9h30 - 9h45 **I.Théry-Parisot, V. L. Coli and L. Cassard**
Discours d'introduction

Session 1 : Analysis by 3D Imaging



©Díaz Bonilla S. et al., 2020

9h45 - 10h30 **S. Díaz Bonilla**
Exploring variability in ceramic surface treatments using confocal microscopy

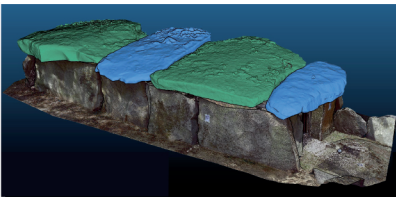


©López-Montalvo E., 2021

10h30 - 11h15 **E. López-Montalvo**
Application of 3D modelling in the study and documentation of Holocene parietal and portable graphic expressions

11h15 - 11h30 Coffee Break

11h30 - 12h15 **A. Laurent, V. Ard, V. Mathé, F. Lüth, É. Bouchet et E. Mens**
De la détection à l'analyse des sites monumentaux néolithiques en volume : premiers résultats de l'ANR Monumen



©Laurent A., Ard V. et al., 2021

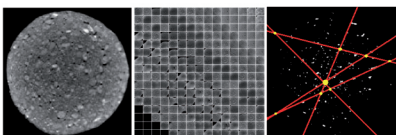
12h15 - 14h00 Lunch Break

Session 2 : Analysis by 3D Imaging and Artificial Intelligence



©Cassard L., 2020

14h - 14h45 **L. Cassard, D. Binder, V. L. Coli, F. d'Errico, G. Durrenmath, J. Kaur, A. Queffelec, S. Sorin and J.-É. Yao**
Prehistoric ornamental and symbolic productions. Method and on-going analytical development by 3D surface imaging and AI applied to Neolithic impressed ceramics and Palaeolithic engraved animal hard tissues



©Dia K. et al., 2021

14h45 - 15h30 **K. Dia, V. L. Coli, L. Blanc-Féraud, J. Leblond, L. Gomart and D. Binder**
Applications of Learning Methods to ancient ceramic manufacturing classification

15h30 - 15h45 Coffee Break

```
def test_label_predictions(model, device, test_loader):  
    model.eval()  
    predictions = []  
    with torch.no_grad():  
        for data, target in test_loader:  
            data, target = data.to(device),  
                target.to(device)  
            output = model(data)  
            prediction_mod(output, 'sheep')  
            prediction_mod(output, 'goat')  
            prediction_mod(output, 'mouflon')  
            prediction_mod(output, 'chamois')  
    return [item() for item in predictions]
```



©Vuillien M. et al., 2021

15h45 - 16h30 **M. N. Do, F. Franco Gallo, V. L. Coli, P. Garberi, L. Gourichon and M. Vuillien**
First consideration of using artificial intelligence to distinguish morphologically related species' bones in archaeozoology: defining the issues and the appropriate tools

16h30 - 17h Table ronde et «tour d'écrans» animés par Vanna Lisa Coli et Laura Cassard